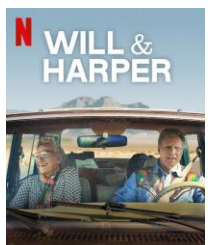




# College Bulletin: W/C Mon 10<sup>th</sup> & 24<sup>th</sup> Feb

## INCLUSION DOCUMENTARY



### WILL & HARPER

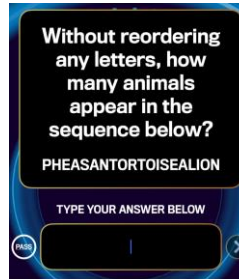
When Will Ferrell finds out his close friend of 30 years is coming out as a trans woman, the two decide to embark on a cross-country road trip to process this new stage of their relationship in an intimate portrait of friendship and transition. Watch on Netflix!

## THOUGHT OF THE WEEK

How you love yourself is how you teach others to love you.

## 1% Club Question of the day

5% Question



## ROLE MODEL OF THE FORTNIGHT



**Rosie Jones** is a British comedian, writer and actress who has used her platform to talk about living with cerebral palsy whilst also being a gay woman. She has talked at length about the discrimination she's experienced and has used her talents to express herself and impress upon people the importance of being yourself and being proud.

## WELLBEING SUPPORT

### Bedford Borough Wellbeing Hub

[https://localoffer.bedford.gov.uk/kb5/bedford/directory/site.page?id=R\\_ScQfCiWk](https://localoffer.bedford.gov.uk/kb5/bedford/directory/site.page?id=R_ScQfCiWk)

### Mental Health & Anxiety

[www.calmharm.co.uk](http://www.calmharm.co.uk) [www.clearfear.co.uk](http://www.clearfear.co.uk) [www.kooth.com](http://www.kooth.com)

### Gender Identity/Sexual Orientation

[www.theproudtrust.org](http://www.theproudtrust.org)

### Bereavement

[www.cruse.org.uk](http://www.cruse.org.uk) [www.winstonswish.org](http://www.winstonswish.org)

### Staying Safe Online

[https://www.thinkuknow.co.uk/14\\_plus/](https://www.thinkuknow.co.uk/14_plus/)

### Eating Disorders

[www.beateatingdisorders.org.uk](http://www.beateatingdisorders.org.uk)

### Substance Misuse Support

<https://aquarius.org.uk/>

**REMINDER:** Our Student Health Guide can be found here: [Student Welfare | kimberleycollege](#)



## KEY DATES/ REMINDERS:

**Mon 10<sup>th</sup> Feb:** Multi sports at Wootton (Volleyball & badminton in the Sports Hall & Girls Football on the 4G) 3.15pm – 4.30pm  
Please complete this form if you wish to take part:

<https://forms.office.com/e/AHxqWdZs7d>

**Tues 11<sup>th</sup> Feb:** U19 netball fixture @ Bunyan Centre

**Wed 12<sup>th</sup> Feb:** Boys football Match away at mark Rutherford

**Fri 14<sup>th</sup> Feb:** FINAL Deadline for £5 Deposits for PROM – please pay on wise pay.

**Fri 14<sup>th</sup> Feb:** Break up for half term (Return Mon 24<sup>th</sup> Feb).

**W/C Mon 24<sup>th</sup> Feb;** Y13 Mocks

**W/C Mon 24<sup>th</sup> Feb:** Y12 Student Leadership Launch (How to apply will be covered in tutor sessions this week). Please see slide 2 for further information.

**W/C Mon 17<sup>th</sup> Mar:** Y12 Mocks

## CELEBRATING THE STEPPING STONES TO SUCCESS

### Outstanding Attitude to Learning

**Y12:** Tristan G, Zara D, Julia M & Sharon T

**Y13:** Harrison L, Isabelle H, Colette F, Oscar G, Lola M, Fraser E & Keeley B

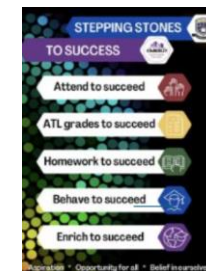
### Excellent HW/ IS Work

**Y12:** Tilly G, Lola S, Mariam K & Charlie F

**Y13:** Sophia U G & Mihinya W

### Enrichment

**A huge WELL DONE** to the Kimberley Cross Country Team who smashed it at the County event last week (Sarah P, Sophie C, Cam B, Harrison C S & Ewan R) and congratulations to Lyla D for winning the event and becoming **COUNTY CHAMPION!**



## KEY COLLEGE CONTACT DETAILS

**Safeguarding:** [safeguarding@wootton.beds.sch.uk](mailto:safeguarding@wootton.beds.sch.uk)

**Pastoral:** [kimberleypastoral@wootton.beds.sch.uk](mailto:kimberleypastoral@wootton.beds.sch.uk)

**Attendance:** [6formattendance@wootton.beds.sch.uk](mailto:6formattendance@wootton.beds.sch.uk)

**Bursary:** [bursary@wootton.beds.sch.uk](mailto:bursary@wootton.beds.sch.uk)

**ANONYMOUS RERPORTING SYSTEM: SELF-REFERRAL FOR SUPPORT:**

<https://forms.office.com/r/ADxircgSWf>

<https://forms.office.com/e/hkK8RggG7g>

## EQUALITY, DIVERSITY & INCLUSION CALENDAR:

### February is LGBTQ+ History Month

1<sup>st</sup> Feb – World hijab day

3<sup>rd</sup>–9<sup>th</sup> Feb – UK Race Equality Week & Children's Mental Health Week

4<sup>th</sup> Feb – World Cancer Day

6<sup>th</sup> Feb – Time to Talk Day

11<sup>th</sup> Feb – Safer Internet Day

20<sup>th</sup> Feb – World Day of Social Justice



## TUTOR SESSIONS in the Lecture Theatre

	Year 13	Year 12
(W1) w/c 10/02/25	Double Guided Study	
(W2) w/c 24/02/25		Exam Stress & Anxiety & Student Leadership Launch



## Y13 Mocks: W/C Mon 24<sup>th</sup> Feb

During this week A Level lessons will be suspended. However, **BTEC and Finance lessons will carry on as normal**. In the unlikely event where a student has a BTEC/Finance lesson and an A Level assessment scheduled at the same time the assessment should be undertaken and the student should notify the relevant member of teaching staff, catching up on any work missed after assessments have finished for the individual student.

Individual timetables will be available on Examsassist from the 3<sup>rd</sup> February.

Students are expected to be signed in by **8.40am for an AM assessment** and **11.55am for a PM assessment**.

Students are encouraged to come into college and work in our independent learning study zones within the college and guided study with pastoral tutors continues to be available during timetabled tutor sessions.

	AM 9am start	PM 12.15pm
<b>Monday 24th February</b>	History Chemistry	Psychology
<b>Tuesday 25th February</b>	English Literature	Business Studies
	Mathematics Paper 1	Law
	Further Mathematics	
<b>Wednesday 26th February</b>	Biology	Politics
		Film
		Philosophy
		Drama
		Textiles
<b>Thursday 27th February</b>	Computer Science	Physics
	Geography	Dance
	Sociology	Eng Lit and Lang
	French	
	Spanish	
<b>Friday 28th February</b>	Music	
<b>Friday 28th February</b>	Mathematics Paper 2	Computer Science
	Further Mathematics	

*you've got this!*

## NEW: Dungeons and Dragons Club

A huge well done & thank you to **Hugo A** for setting up a new lunchtime club – if you want to join the Dungeons and Dragons Club – **please head to 1s02 on Thursday lunchtimes**.

If you are interested in setting up another lunchtime club – please speak to the Pastoral Team for support.



## Y12 Tutor Sessions this week

We will be covering a lot of content in Y12 tutor sessions this week:

- The main focus will be preparation for your Y12 assessments – covering exam techniques and dealing with exam stress and anxiety. We will also be showing you how to access 'Exams Assist' an app that tells you your exam timetable, room location, seat number and any access arrangements you might have.

Additionally, we will be launching the full range of Student Leadership Roles:

- College Presidents
- College Ambassadors
- Subject Ambassadors
- College Council



Finally, in the guided study part of your tutor session, there will be an opportunity to watch a work experience webinar. (Please bring headphones for this so you are able to watch it on your phone).

- Due to the Y13 Mock Exams, the tutor session delivery will take place in **2<sup>nd</sup> floor events area all week** and the guided study rooms are as follows:

Mon – 2n16 / Tues – 1s06 / Wed – 1n10 & 1n11 / Thurs – 2n16 / Fri – 2n15