

## INCLUSION FOCUS FILM: The Swimmers

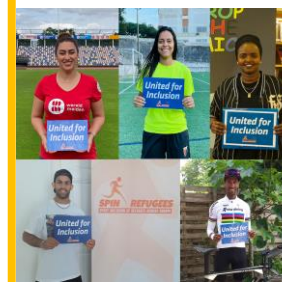


The plot follows the life story of teenage Syrian refugees Yusra Mardini and her sister Sarah Mardini, who swam alongside a sinking dinghy of refugees to lighten it, and eventually help 18 refugees to reach safety across the Aegean Sea while being smuggled from Izmir towards Lesbos. Subsequent struggles as refugees are vividly depicted, but Yusra Mardini's swimming career sees her reaching the Rio 2016 Olympics as a member of the Refugee Olympic Team

## THOUGHT OF THE WEEK



## ROLE MODELS OF THE FORTNIGHT: Refugee Athletes



The "United for Inclusion" Ambassadors emphasize the valuable contribution of refugees and asylum seekers to sport, from the grassroots level to national teams and the Olympic Games!

<https://sportinclusion.net/making-sport-more-inclusive-refugee-athletes-as-role-models/>

## WELLBEING SUPPORT

### Bedford Borough Wellbeing Hub

[https://localoffer.bedford.gov.uk/kb5/bedford/directory/site.page?id=R\\_ScQfCiWk](https://localoffer.bedford.gov.uk/kb5/bedford/directory/site.page?id=R_ScQfCiWk)

### Mental Health & Anxiety

[www.calmharm.co.uk](http://www.calmharm.co.uk) [www.clearfear.co.uk](http://www.clearfear.co.uk) [www.kooth.com](http://www.kooth.com)

### Gender Identity/Sexual Orientation

[www.theproudtrust.org](http://www.theproudtrust.org)

### Bereavement

[www.cruse.org.uk](http://www.cruse.org.uk) [www.winstonswish.org](http://www.winstonswish.org)

### Staying Safe Online

[https://www.thinkuknow.co.uk/14\\_plus/](https://www.thinkuknow.co.uk/14_plus/)

### Eating Disorders

[www.beateatingdisorders.org.uk](http://www.beateatingdisorders.org.uk)

### Substance Misuse Support

<https://aquarius.org.uk/>



### REMINDER:

Our Student Health Guide can be found on our college website here: [Student Welfare | kimberleycollege](#)

## KEY DATES/ REMINDERS:

**Tues 18<sup>th</sup> June:** Psychology Trip – University of Buckingham

**Tues 18<sup>th</sup> June:** UCAS Discovery Exhibition at University of Bedfordshire. (Further info has been emailed to students & Parents)

**Thurs 20<sup>th</sup> June: 12:20pm - 12:50pm** Alumni University talk & **1:30pm - 2:00pm** Alumni Apprenticeship talk both in 1n20.

**Fri 21<sup>st</sup> June: 12:30pm – 1:15pm** Eid Celebration at Lunch time (Note slightly earlier lunch time). See Slide 4 for more info.

**Fri 21<sup>st</sup> June:** Deadline for £10 Alton Towers Trip Deposit

**Mon 24<sup>th</sup> June:** Early Closure (See slide 3 for timings)

**Tues 25<sup>th</sup> June:** Retake Mocks – Day 1

**Tues 25<sup>th</sup> June:** Pupil Voice Conference – Bedford Football Club

**Tues 25<sup>th</sup> June:** General Election 'drop-in' lunch meeting 1s07

**Wed 26<sup>th</sup> June:** Retake Mocks – Day 2

**Friday 28<sup>th</sup> June:** Pride Celebration at Lunch 12:50pm – 1:50pm (Note slightly longer lunch) See slide 5 for more information.

**W/C 1<sup>st</sup> July – Work Experience Focus Week** (See slide 3)

## TUTOR SESSIONS

### Y12 PM Sessions

W/C 17 <sup>th</sup> June	NEXT STEPS: FOCUS Student Finance, personal statements & CVs Plus General Election.
W/C 1 <sup>st</sup> July	No onsite tutor sessions (See slide 3)
W/C 15 <sup>th</sup> July	Celebration Assembly & Optional Enrichment Activities

## CELEBRATING STEPPING STONES TO SUCCESS

### Outstanding Attitude to Learning

**Y12:** Owen D, Shenali L, Noore A-J & Abi B

### Outstanding Homework

**Y12:** Ewan H, Mahia H, Mariha H, Safaa I, Evelyn J, Zainab K, Harvey L, Bethan N, Kadek O-R, Matthew P, Humayal R, Edwin S and Alex S,

### Enrichment

**Y12 Graphics** class for attending the Alumni University Guest speaker talk.

All students who are planning the **Eid Celebration**

All students who are planning the **Pride Celebration!!**

(Thank you for going above and beyond!! 😊)



## KEY COLLEGE CONTACT DETAILS

**Safeguarding:** [safeguarding@wootton.beds.sch.uk](mailto:safeguarding@wootton.beds.sch.uk)

**Pastoral:** [kimberleypastoral@wootton.beds.sch.uk](mailto:kimberleypastoral@wootton.beds.sch.uk)

**Attendance:** [6formattendance@wootton.beds.sch.uk](mailto:6formattendance@wootton.beds.sch.uk)

**Bursary:** [bursary@wootton.beds.sch.uk](mailto:bursary@wootton.beds.sch.uk)

**ANONYMOUS RERPORTING SYSTEM: SELF-REFERRAL FOR SUPPORT:**

<https://forms.office.com/r/ADxircgSWf>

<https://forms.office.com/e/hkK8RggG7g>

## EQUALITY, DIVERSITY & INCLUSION CALENDAR:

### JUNE IS LGBTQ+ PRIDE MONTH

- 16<sup>th</sup> June: Neurodiversity Pride Day
- 17<sup>th</sup> June: Eid ul Adha
- 18<sup>th</sup> June: Autistic Pride Day
- 19-25<sup>th</sup> June: Learning Disability Week
- 20<sup>th</sup> June: Refugee Day
- 22<sup>nd</sup> June: National Windrush Day
- 23<sup>rd</sup> June – Women in Engineering Day



## UCAS

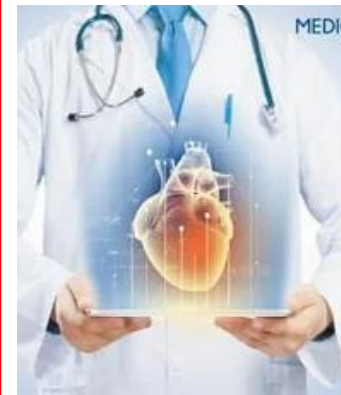
## CAREERS / APPRENTICESHIPS

### UNIVERSITY OF THE FORTNIGHT- Imperial College London



- Rated 5<sup>th</sup> in the league table of UK universities (Sunday Times 2024)
- Rated 8<sup>th</sup> in the world (Sunday Times 2024)
- Rated 1<sup>st</sup> in the UK for graduate prospects (Guardian 2024)
- **A Russell Group** university
- Specialises in business, engineering, medicine, and science
- 78 full time degree courses to choose from
- **Open days:** Wed 26 and Thurs 27 June+ Sunday 14 September- **booking essential**
- Guaranteed college accommodation for first year student

### CAREER OF THE FORTNIGHT - Cardiologist



#### **Life as a Cardiologist**

You'll improve patients' quality of life after a life-changing event such as a heart attack, heart failure or a heart rhythm disorder.

You'll also be involved in understanding diseases, how they progress and can be prevented.

You'll care for adult patients with conditions such as angina, arrhythmias, heart murmurs, cardiomyopathy, hole in the heart and other forms of congenital heart disease.

Working as a cardiologist, you'll be involved in an often fast-moving and dynamic field of medicine.

### UNIVERSITY PATHWAY - FURTHER INFORMATION

What should I be doing **now**?

- Ensure you have registered on **UCAS** (email [cstewart@wootton](mailto:cstewart@wootton)) if you have not done this yet
- Start to use **Unifrog** and **UCAS** to research possible subjects and universities
- Use **Unifrog** to create lists of possible universities using UCAS grades
- Use **Unifrog** to start your **personal statement**
- **Check if there are entrance examinations or tests for your course and find out how to register. Check the deadlines for registration.**
- Think about **WHERE** you would like to live. How far away from home do you want to be? Would you prefer to be in a **city** or a **campus university**?
- Book **open days** with the university- ensure you **visit**

### Cardiologist - FURTHER INFORMATION

**How much can I earn?**

The basic salary ranges from £29,384 - £34,012. Consultants can earn up to £114,003.

**What are the benefits?**

- Making a difference
- Flexible and part-time working
- Good holiday entitlement
- NHS discount in shops and restaurants

**Entry requirements**

Your first step is medical school. Typically, you'll need excellent GCSEs and three A or A\* passes at A level including chemistry for a five-year undergraduate degree in medicine. Many medical schools also ask for biology and others may require maths or physics.



## EARLY CLOSURE - MONDAY 24<sup>TH</sup> JUNE (Y10 Meet the tutor event at Wootton)

Early Closure Timings at Kimberley	Early Closure Timings at Wootton
<b>AM Session: 8:30am – 10:30am</b>	Shuttle bus leaves Kimberley at 8:20am <b>8:30am – 10:30am</b>
<b>BREAK: 10:30am – 11:00am</b>	Shuttle bus leaves Wootton at 10:30am
<b>PM Session: 11:00am – 1:45pm</b>	<b>11:00am – 1:45pm</b>
<b>LUNCH: 12:15pm – 12:45pm</b>	Shuttle bus leaves Kimberley at 10:50am <b>LUNCH: 12:30pm – 1:00pm</b> Shuttle bus leaves Wootton at 1:45pm Shuttle bus leaves Kimberley at 1:55pm

## THANK A TEACHER DAY Wednesday 19<sup>th</sup> June



Click on this link to send a free personalised card to a member of staff  
<https://thankateacher.co.uk/thank-a-teacher/thank-a-teacher-form/>

## WEEK COMMENCING MONDAY 1<sup>ST</sup> JULY

**Monday 1<sup>st</sup> July AM & PM:** Students will undertake remote learning tasks linked to work experience & life after Kimberley at home. (APART from any student leaders who will be onsite all day supporting the Y12 Induction Day).

**Tuesday 2<sup>nd</sup> July AM & PM:** Students will continue with remote learning tasks at home linked to work experience and life after Kimberley. (APART from a small group of students working with Mrs Rydeheard)

**Wednesday 3<sup>rd</sup> July AM:** Students continue with remote learning tasks linked to work experience at home.

**Wednesday 3<sup>rd</sup> July PM – Friday 5<sup>th</sup> July PM:** Students return to normal lessons (NO tutor Sessions) – the focus in the lessons will be linking your subject area to careers and next steps. (No curriculum content will be covered) **Any student** who has the opportunity to continue with any form of work experience between Wednesday PM – Friday PM is encouraged to do so. (We will share an MS form with you to identify when & where you are doing this for attendance purposes).

Additionally: **Thursday 4<sup>th</sup> July:** We will have a series of external speaker talks about finance and will be hosting a 'Mock Election' in College at lunch time.

## ALTON TOWERS TRIP

Reminder that we intend to run a rewards/ enrichment trip to Alton Towers on Friday 20<sup>th</sup> September 2024. The attached letter was sent to you & your parents last week via email. **The initial deposit of £10 must be paid on wisePAY by FRIDAY 21<sup>st</sup> JUNE** (any issues with wisePAY account - email [accounts@wootton.beds.sch.uk](mailto:accounts@wootton.beds.sch.uk)) [N.Genders: REMINDER - ALTON TOWERS TRIP](#)

## DAMAGE IN TOILETS

We continue to have damage in the toilets, therefore the following will happen:

- Member of staff will be checking the toilets every hour to narrow down window of incidents & then be able to identify students on CCTV.
- If this doesn't resolve incidents happening, we will lock the toilets during lesson time & open only at break & lunch where they will be monitored by staff throughout.
- Reminder to use anonymous reporting system to help us narrow down probably 1 or 2 students who are spoiling it for everyone else: <https://forms.office.com/r/ADxircgSWf>

## ABSENCES

Some of you will be wanting to attend University Open Days / have interviews/ have driving tests etc this half term – please remember to fill out a leave of absence form so that it can be officially approved in advance. Your teachers need to be made aware as well as the attendance team. **Forms can be collected from reception or the attendance office.**

## CAR PERMITS

Some of you are already starting to drive – reminder: To bring your car onsite – you need to get a permit from reception. Students should only park in the bays furthest away from college:



## PRINTERS

Reminder the Printers on 1<sup>st</sup> & 2<sup>nd</sup> floor north are for STAFF only. Student must use the printers on 1<sup>st</sup> & 2<sup>nd</sup> floor south wings.

## LANYARDS

These need to be on at ALL times. New system coming in September which will involve you paying to replace your lanyard if not wearing it.



# Celebrating Eid at Kimberley

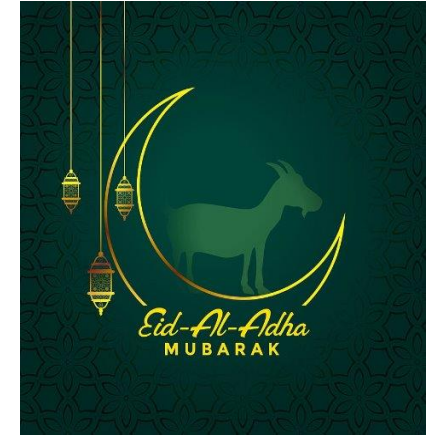
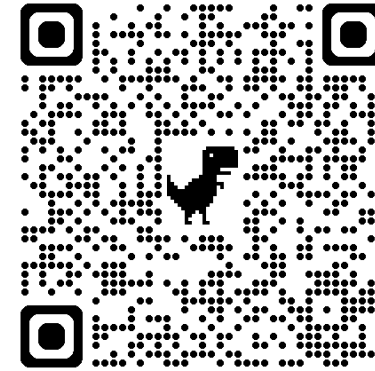


**Friday 21<sup>st</sup> June 2024: 12:30pm – 1:15pm in the atrium**

To celebrate the diversity in our college, a few students have brought forward the idea of celebrating Eid-ul-adha!

- **What to expect on the day:**

- Nasheeds playlist
- Food donations
- Jummah prayer at 1:05pm (Males – Prayer room & Females - 2s16)
- Kahoot quiz during tutor sessions that week
- All money generated goes towards Human Appeal



- **What do you need to do?**

- Bring in your Eid clothes (if you want) to change into or wear them all-day (Gym changing rooms may be used)
- Bring in food or snacks that you have on Eid for donations **(Please don't forget to have a label with ingredients & remember NO NUTS!)**
- Scan the QR Code above on the day or in advance of the day to donate to Human Appeal or click on the link below:  
<https://www.justgiving.com/page/kimberley-college-part-of-wootton-academy-trust-1718208304684?newPage=true>
- Any questions or other ideas you can ask our team or Ms. Genders
- The student team: Zainab Khan, Mahia Hoque, Mariha Hoque, Humayal Rahman
- We look forward to seeing as many people as possible, everyone is welcome to enjoy the afternoon and learn about what Eid-ul-adha is about.



# Celebrating Pride at Kimberley



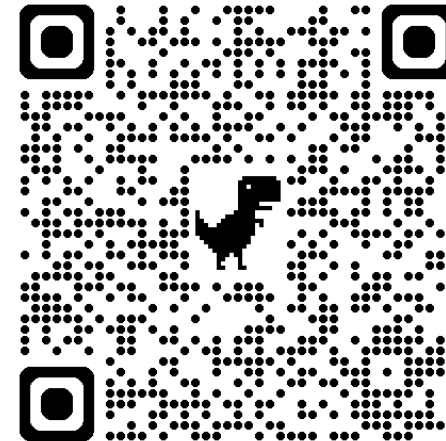
Friday 28<sup>th</sup> June 2024



12:50pm – 1:50pm in the atrium

June is PRIDE Month, our Kimberley LGBTQ+ Club are organising the following to raise awareness and celebrate our LGBTQ+ Community.

- Rainbow theme / colorful dress for the day
- Pride Play List
- Rainbow theme bakes (donations to charity to sample!)
- £10 Amazon Voucher for best 'Pride Themed Cake'
- Elton John themed Photo Booth
- Local LGBTQ+ Charity Q Alliance Stall
- Lots of stickers to hand out!
- **What do you need to do?**
  - Dig out your bright colors / rainbow themed attire
  - Let the team know if you are able to donate any cakes/ bakes for sampling.
  - **Label all ingredients when bringing in cakes/ bakes – remember NO NUTS!!**
  - Scan the QR code above on or prior to the day to donate to Stonewall Charity:



<https://www.justgiving.com/page/kimberley-college-part-of-wootton-academy-trust-1718209175648?newPage=true>