



### INCLUSION FOCUS DOCUMENTARY:

Roman Kemp: Our Silent Emergency  
Roman Kemp explores the mental health and suicide crisis affecting young men in the UK. He takes a closer look at the urgent issue of young men's mental health, exploring why increasing numbers are taking their own lives and the reasons why so many of them never ask for help.



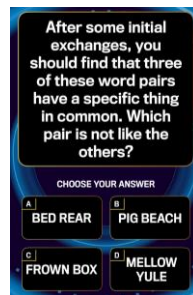
<https://www.bbc.co.uk/programmes/p098hsv6>

### THOUGHT OF THE WEEK

MENTAL  
who talk  
HEALTH  
#menshealthmonth

### 1% Club Question of the day!

20%



### ROLE MODEL OF THE FORTNIGHT



Dwayne 'The Rock' Johnson- "I've worked hard to gain the emotional tools to work through any mental pain that may come to test me. It can't be fixed if you keep that pain inside. Having the courage to talk to someone is your superpower. I lost two friends to suicide. Talk to someone. Despite how you may feel, you're never alone."

### WELLBEING SUPPORT

Bedford Borough Wellbeing Hub

[https://localoffer.bedford.gov.uk/kb5/bedford/directory/site.page?id=R\\_ScQflCIWk](https://localoffer.bedford.gov.uk/kb5/bedford/directory/site.page?id=R_ScQflCIWk)

Mental Health & Anxiety

[www.calmharm.co.uk](http://www.calmharm.co.uk) [www.clearfear.co.uk](http://www.clearfear.co.uk) [www.kooth.com](http://www.kooth.com)

Gender Identity/Sexual Orientation

[www.theproudtrust.org](http://www.theproudtrust.org)

Bereavement

[www.cruse.org.uk](http://www.cruse.org.uk) [www.winstonswish.org](http://www.winstonswish.org)

Staying Safe Online

[https://www.thinkuknow.co.uk/14\\_plus/](https://www.thinkuknow.co.uk/14_plus/)

Eating Disorders

[www.beateatingdisorders.org.uk](http://www.beateatingdisorders.org.uk)

Substance Misuse Support

<https://aquarius.org.uk/>

**REMINDER:** Our Student Health Guide can be found here:

[Student Welfare](#) | [kimberleycollege](#)



### KEY DATES/ REMINDERS:

W/C 18<sup>th</sup> November: Y12 In-Class Assessments begin

Tues 19<sup>th</sup> Nov: U19 County Netball Tournament (See Teams for more info)

Wed 20<sup>th</sup> Nov: U19's Boys football v QEQS at home 3pm KO

Thurs 21<sup>st</sup> Nov: Prospective student tours – Y12 Transition

Ambassadors meet Mrs Neal at 8.45am in the canteen

Thurs 21<sup>st</sup> Nov: Y12 Transition Ambassadors meet @ 1.10pm in Lecture Theatre

Fri 22<sup>nd</sup> Nov: Ready2Lead Bake Sale at lunch in the atrium

Mon 25<sup>th</sup> Nov: Prospective student tours (Same as above)

Mon 25<sup>th</sup> Nov: UCAS event for KEEP Students 1.40-2.10pm in Lecture Theatre

Wed 27<sup>th</sup> Nov: H&SC Trip

Fri 29<sup>th</sup> Nov: STAFF TRAINING DAY (College closed to students)

Mon 2<sup>nd</sup> Dec: Christmas Volleyball Tournament @ Wootton 3.30pm – 5pm (more info to follow)

Tues 3<sup>rd</sup> Dec: College UCAS Deadline

Thurs 5<sup>th</sup> Dec: Y13 Parents/ Carers evening

### CELEBRATING THE STEPPING STONES TO SUCCESS

Outstanding Attitude to Learning

Y12: Daisy L, Chloe D L, Gabriel H, Milei B & Jess J

Y13: Cadence D

Excellent HW

Y12: Emma C & Ollie G

Y13: Holly M

Enrichment

Well done to the Boys football team for holding on for a 3-3 draw against Sharnbrook

Well done to Nancy S & Karanpreet S for a fantastic talk at the KEEP event.



### KEY COLLEGE CONTACT DETAILS

Safeguarding: [safeguarding@wootton.beds.sch.uk](mailto:safeguarding@wootton.beds.sch.uk)

Pastoral: [kimberleypastoral@wootton.beds.sch.uk](mailto:kimberleypastoral@wootton.beds.sch.uk)

Attendance: [6formattendance@wootton.beds.sch.uk](mailto:6formattendance@wootton.beds.sch.uk)

Bursary: [bursary@wootton.beds.sch.uk](mailto:bursary@wootton.beds.sch.uk)

**ANONYMOUS RERPORTING SYSTEM: SELF-REFERRAL FOR SUPPORT:**

<https://forms.office.com/r/ADxircgSWf>

<https://forms.office.com/e/hkK8RggG7g>

### EQUALITY, DIVERSITY & INCLUSION CALENDAR:

November is Men's Health Awareness Month and Disability History Month

20<sup>th</sup> Nov: Transgender Day of Remembrance

22<sup>nd</sup> Nov: St Andrews Day

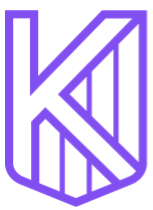
1<sup>st</sup> Dec: World Aids Day

3<sup>rd</sup> Dec: International Day of persons with disabilities



### TUTOR SESSIONS in the Lecture Theatre

	Year 13	Year 12
(W1) w/c 18/11/24	Next Steps: Interviews & UCAS	
(W2) w/c 25/11/24		Mental health & self-checks



## Message from the Attendance Team



**Ready2Lead  
Bake Sale**  
Please bring  
cash on Friday  
22<sup>nd</sup> November  
to support this  
event 😊

- For any absence it is essential that you inform Attendance as well as your teacher.
- For any absence parents/carers should let us know via the Parents link on the website; a phone call to 01234 762890 and choose the Attendance option or an email to [6formattendance@wootton.beds.sch.uk](mailto:6formattendance@wootton.beds.sch.uk)
- If it is an extended leave, please complete a Leave of Absence form. Paper copies are available at Reception or can be completed online.
- If you need to leave college early, you must sign out on the Students' Signing In/Out clipboard at Reception giving a reason. Also, if you are late for your lesson you must sign in on this.
- If you have an appointment, please let us know before the actual day. We will need to see evidence, either a paper copy or on your phone, for us to be able to authorise the absence.
- Finally – if you are going offsite at break or lunch or at any time during the day – you **MUST** swipe out and then swipe in when you return.

## Caring for our Community – Christmas in a Box Appeal

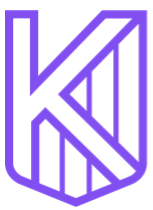


- Please see the poster attached to the bulletin on your year group teams page for the shopping list.
- There will be a box in reception, or you can hand in items at the Pastoral Tutor Office
- Please bring in items by Wednesday 4<sup>th</sup> December

## Student Focus

Over the next couple of weeks, we will be focussing on the following:

- **STUDENT FOLDERS:** These should be organised appropriately for effective learning to take place. We expect to be able to see them on desks in lessons OR in your Subject Teams page (If it is a computer-based lesson)
- **STUDENT PUNCTUALITY:** We will be closely monitoring lates to lesson and specifically lates back from break & lunch.

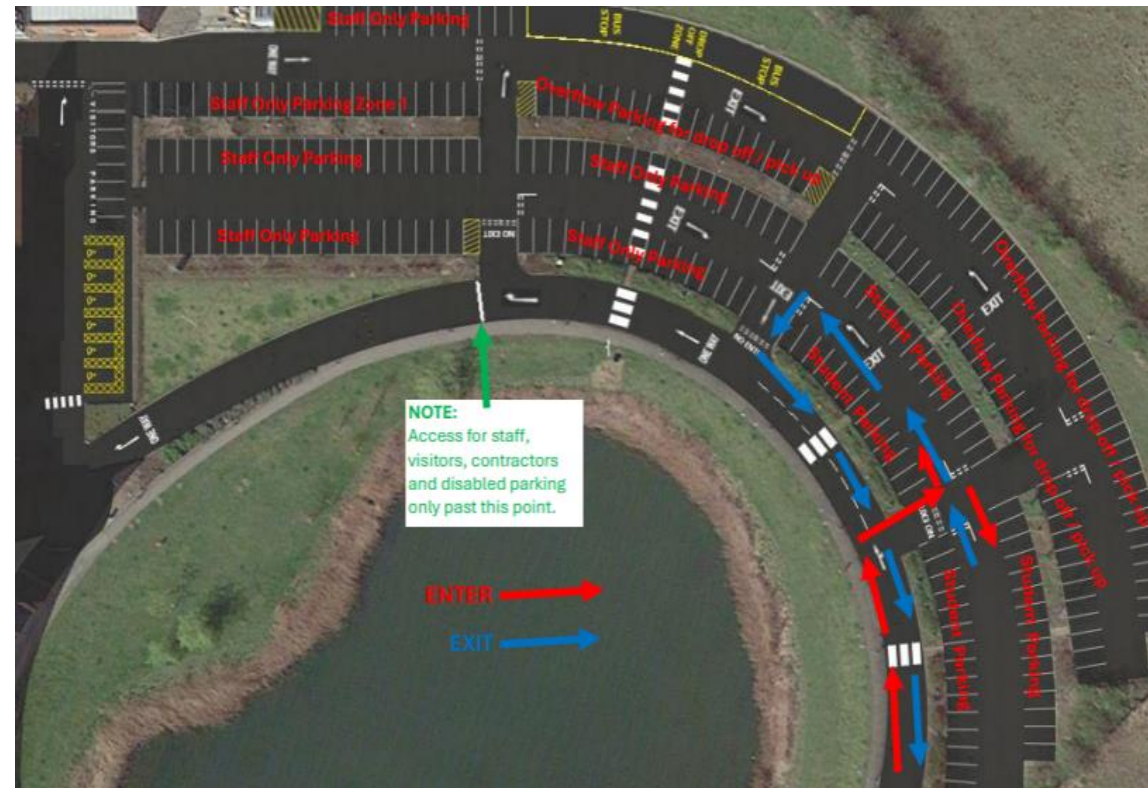
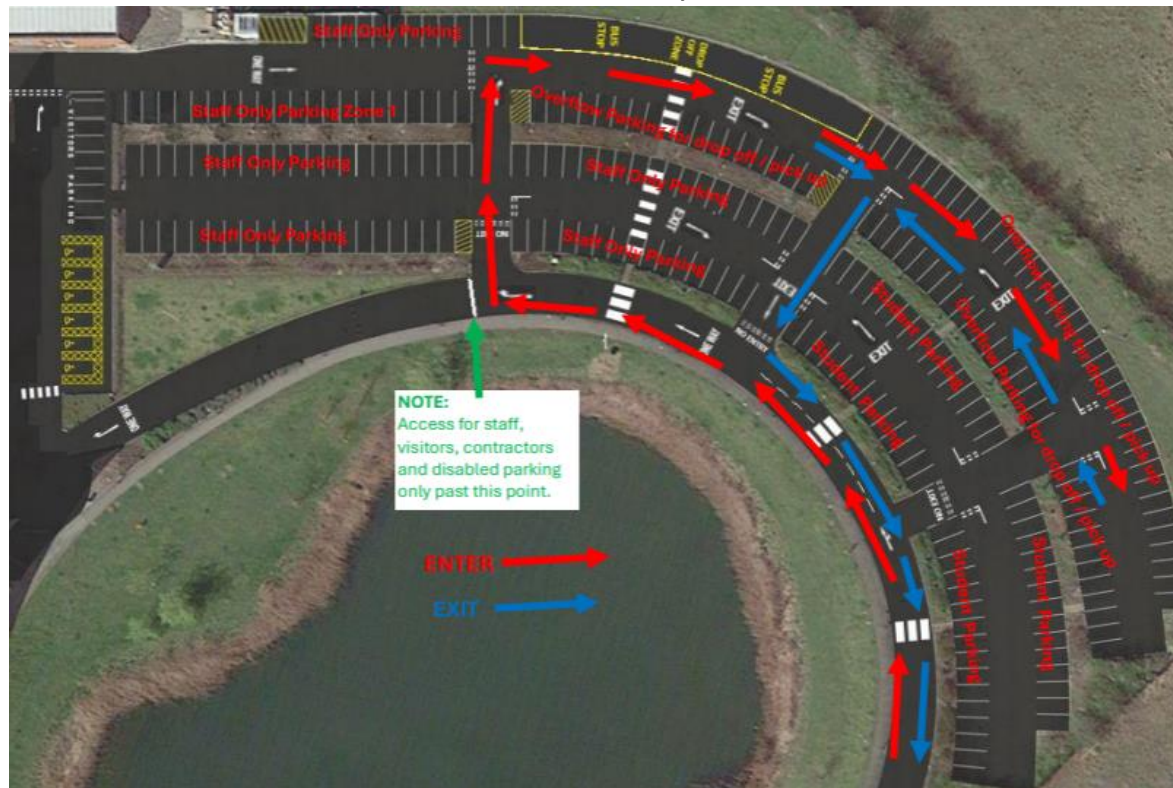


Kimberley  
Sixth Form

# College Bulletin: W/C Mon 18<sup>th</sup> & 25<sup>th</sup> Nov

## Parent/ Carer Information

## Student Information



The college car park was re-lined last weekend – this was specifically designed to support the safety of students in the car park area.

- If you get dropped off / picked up – please make sure you are familiar with the one-way system, entry and exit points, drop off and pick up zones and student/ staff/ visitor and disabled parking areas.
- Please communicate with your parents & carers so that they know what the expectations are. (Information has also been sent to them)
- Students who bring vehicles onsite – must have a parking permit. These will be checked w/c 25<sup>th</sup> November – please collect from reception if you don't have one already.
- Please use the pelican crossings when you are walking from the car park to the path around the lake.
- Please ensure that you arrange with taxi's / driving lessons etc to pick up/ drop off in the zones identified.

# Next Steps Information

## UCAS

### UNIVERSITY OF THE FORTNIGHT - BRIGHTON



- Five campuses spread out across the area
- Main campus is 5 minutes from the city centre
- Ranks in the top 10 of student cities (QS rankings)
- Over 200 courses available
- Alumni include Julien Macdonald, Philip Reeve, Jo Whiley, Tanya Streeter
- All eligible students guaranteed a place in halls of residence
- Over 60 sports clubs
- Ranked 71<sup>st</sup> in the overall UK league table

### UNIVERSITY PATHWAY - FURTHER INFORMATION

#### Year 13

What should I be doing **now**?

- Complete any university visits
- Continue to use **Unifrog** to finalise **personal statement**
- Once you are ready, complete **'pay and send'**. This will not send it to UCAS if you have linked your application to Kimberley. **It sends it to Mrs. Stewart.** If you are waiting for a UCAS grade update following your mocks, please wait until this is confirmed before you **'pay and send'**
- Read the guide to the UCAS waiver and email Mrs. Stewart if you feel that you meet the conditions:

[Free school meals fee waiver FAQs](#) | [Undergraduate, Conservatoires](#) | [UCAS](#)

#### Year 12

- Continue to research Universities
- Use **Unifrog** to research possible subjects and create lists of University options

## CAREERS / APPRENTICESHIPS

### CAREER OF THE FORTNIGHT - SOLICITOR



Solicitors advise clients about the law and act on their behalf in legal matters.

As a solicitor, you would:

- Draft confidential letters, contracts and legal documents
- Instruct barristers or advocates to act for clients
- Research legal records and case law
- Attend meetings, tribunals and negotiations to resolve legal issues
- Manage finances and prepare papers for court
- Keep up to date with changes in the law

### FURTHER INFORMATION - SOLICITOR

#### How much can I earn?

The average salary ranges from £30,000 - £80,000.

#### What it takes -

You'll need:

- Legal knowledge including court proceedings & government regulations
- Excellent verbal & written communication skills
- Active listening skills
- The ability to think clearly using logic & reasoning

#### Entry requirements -

University or Apprenticeship - both require 3 A levels, or equivalent.

Competition for solicitor roles is strong so you need to show that you have consistently good grades as you progress through your education.

Getting work experience in different types of legal settings can help you to stand out and show your commitment.